
ABOUT THE EVENT

Join the National Council of Teachers of Mathematics for the 2025 Annual Meeting in Atlanta this fall, October 15–18.

This year's meeting will honor the historical and contemporary contributions of mathematics educators to classrooms and communities. Together, we'll celebrate and elevate the creative teaching practices that have transformed math learning for each and every student.

Here are just a few of the reasons you will want to attend:

- Inspiring education sessions from leading mathematics educators
- Expert keynote speakers and leaders in mathematics education
- Networking, games, giveaways and great ideas
- New advances, technologies, and ideas on display in our exhibit hall

NCTM is committed to ensuring that our events are fully accessible to all persons. Visit our [Accessibility & Inclusion](#) section for more details.

When

Wednesday–Saturday
October 15–18, 2025

Where

[Georgia World Congress Center](#)
285 Andrew Young International Boulevard, NW
Atlanta, Georgia

HQ Hotel

[Omni Atlanta Hotel at Centennial Park](#)
190 Marietta Street, NW
Atlanta, Georgia

Must book by 9/19/25

Keynote Speakers



Robert Berry



Lateefah Id-Deen



Dorothy White

KEYNOTE SPEAKERS

Speaking at the conference?

Thank you for sharing your expertise with the mathematics community. Visit our [Speaker Portal Page](#) for more information on preparing for the conference, including registration information, technical setup, meeting updates, travel, and much more.

SPEAKER INFORMATION

Schedule

PRELIMINARY PROGRAM - THURSDAY |

PRELIMINARY PROGRAM - FRIDAY |

PRELIMINARY PROGRAM - SATURDAY

Day 1

Day 2

Day 3

Day 4

WEDNESDAY, OCTOBER 15, 2025

All times are Eastern Time

7:00 AM–6:00 PM

Registration

Exhibit Hall A

Note: Express registration is open Tuesday, October 14 between 2:00–5:00 PM.

Preconference Workshops

8:30 AM–12:00 PM

The Impact of Identity: Rethinking Agency, Standards, and Assessment in Elementary Mathematics

9:00 AM–12:00 PM

Using Lessons, Investigations, and Routines to Elevate High School Mathematics

9:00 AM–4:30 PM

Developing Proactive Interventions that Engage – Priming Students for Success Grades 1-5

and Assessment in Secondary Mathematics

10:00 AM–6:00 PM

NCTM Central

Get early access to NCTM Central, located inside the Exhibit Hall, and speak directly to NCTM staff to learn how NCTM supports you and the field of mathematics education.

2:00–4:00 PM

NCTM Regional Caucuses

Regional Caucuses allow NCTM's Affiliates and members to meet by area of interest and region to discuss issues and recommendations, network with other leaders, and get information on new initiatives in mathematics education.

Note: Western Regional Caucus will take place from 7:00–9:00 PM ET

4:00–4:30 PM

Annual Meeting Overview & Orientation

Whether you're new to NCTM or a seasoned veteran, the conference has something for you! Hosted by members of the Board of Directors, this session will show you how to maximize your overall conference experience. Learn all the new, innovative aspects this year's meeting is showcasing or discover something you've missed in the past. Find out how to navigate presentations, learn how to use the conference app, and network with other attendees.

4:00–6:00 PM

Exhibits

5:30–7:00 PM

Opening Session

CONFERENCE STRANDS

The programs of the National Council of Teachers of Mathematics present a variety of viewpoints. The content and views expressed or implied in these presentations should not be interpreted as official positions of the Council. References to particular commercial products by a speaker are not an NCTM endorsement of said product(s) and should not be construed as such. Any use of email addresses beyond personal correspondence is not authorized by NCTM.

Rates

INDIVIDUAL REGISTRATION

GROUP REGISTRATION

| Early-Bird Registration by September 4, 2025 | Regular Registration by October 14, 2025 | On-site Registration October 15- 17, 2025 |
|---|---|--|
|---|---|--|

NCTM Member Registration Fees

Membership renewal not included.

| | | | |
|--|-------|-------|-------|
| Premium NCTM Member Registration | \$375 | \$445 | \$515 |
| Essential and Intro Member Registration | \$429 | \$509 | \$589 |
| Emeritus & Life Members | \$269 | \$289 | \$309 |
| Student Members | \$269 | \$289 | \$309 |

Group Registration

| | by September 4, 2025 | by October 14, 2025 | October 15- 17, 2025 |
|---|-------------------------|------------------------|-------------------------|
| Rates are per registrant, for registering groups of 5 or more. One year of Essential membership included. <i>Some exclusions may apply.</i> | | | |
| Group Full Registration | \$458 | \$543 | \$628 |
| Group One-Day Registration | \$321 | \$380 | \$440 |
| Non-Member Individual Registration | | | |
| Non-Member Full Registration Includes a complimentary essential membership . | \$539 | \$639 | \$739 |
| Student Non- Member Includes a complimentary student membership. | \$319 | \$339 | \$359 |
| One Day Registration Date must be specified at registration. | | | |
| One Day Non- Student (NCTM Member) | \$299 | \$355 | \$409 |
| One Day Non- Student (Non- Member) | \$375 | \$445 | \$515 |

| | by September 4, 2025 | by October 14, 2025 | October 15- 17, 2025 |
|---|---|---|-------------------------|
| One-Day Student Member Registration | \$189 | \$199 | \$215 |
| Add-On Activities | | | |
| Preconference Workshops* <i>Full day workshops include lunch.</i> | With Full Conference | Without Full Conference | |
| 1/2 Day: The Impact of Identity: Rethinking Agency, Standards, and Assessment in Elementary Mathematics | Early Bird: \$75; Regular: \$80 | Early Bird: \$100; Regular: \$105 | |
| 1/2 Day: Using Lessons, Investigations, and Routines to Elevate High School Mathematics | Early Bird: \$75; Regular: \$80 | Early Bird: \$100; Regular: \$105 | |
| Full Day: Developing Proactive Interventions that Engage - Priming Students for Success in Grades 1-5 | Early Bird: \$160; Regular: \$175 | Early Bird: \$210; Regular: \$225 | |
| 1/2 Day: The Impact of Identity: Rethinking Agency, | Early Bird: \$75; Regular: \$80 | Early Bird: \$100; Regular: \$105 | |

| | by September 4, 2025 | by October 14, 2025 | October 15- 17, 2025 |
|---|-------------------------|----------------------------|-------------------------|
| Standards, and Assessment in Secondary Mathematics | | | |
| | | | |
| Onsite Events | With Full Conference | Without Full Conference | |
| MET Celebration Party* | \$60 | \$60 | |
| *While supplies last | | | |

Exhibit Hall



Plan to stop by the Exhibit Hall and chat with exhibitors! They will be onsite and are ready to meet with you to hear about your teaching needs.

offerings, classroom resources, grants/scholarship opportunities for teachers, and more.

BECOME AN EXHIBITOR OR SPONSOR

VIEW EXHIBITING COMPANIES

Questions about Exhibit/Sponsor Opportunities? Contact
NCTM@theYGSgroup.com

Stay Informed

Enter your information below to start receiving communications about this event.

FIRST NAME *

LAST NAME *

EMAIL *

COUNTRY *

United States

SIGN UP

FAQ

Are children permitted to attend?

Are there alternatives to online registration?

Are Visual Impairment assistants available?

Are Wheelchair and Scooter Rentals available?

Can I register a group?

Do you offer continuing education or credits?

Do you offer group discounts?

How can I modify my name badge?

How can I obtain a press pass for the meeting?

How do I pay by purchase order?

How do I qualify for student rates?

How do I register if I am chosen as a speaker?

How do I take advantage of member discounts?

Is the GWCC an ADA accessible facility?

Is there a First Aid station?

What if I have a question that isn't answered here?

What is the cancellation/refund policy?

Contact Us



ADDRESS

1906 Association Drive, Reston, VA, USA 20191



PHONE NUMBER

+1 (703) 620-9840



EMAIL

nctm@nctm.org

NAME

EMAIL

MESSAGE

Founded in 1920, the National Council of Teachers of Mathematics (NCTM) is North America's largest mathematics education organization.

USEFUL LINKS

- › [Home](#)
- › [About us](#)
- › [Membership](#)
- › [Terms of service](#)
- › [Privacy policy](#)

CONFERENCE LINKS

- › [Past and Future Events](#)
- › [Code of Conduct](#)
- › [Exhibit, Advertise and Sponsor](#)

CONTACT US

1906 Association Drive
Reston, VA 20191
United States
Phone: (703) 620-9840
Email: nctm@nctm.org



Tired of achievement gaps? Unite your educators at All Means All for real results — [Learn more](#) >



Solution Tree

Transform education worldwide to ensure learning for all



[US/Global](#) ▼

[Sign In/Register](#)



[Our Solutions](#)

[Books & Videos](#)

[Events](#)

[PD](#)

[Digital Tools](#)

[Free Resources](#)

[About](#)

[Home](#) > [PLC at Work[®] Institute](#)

PLC at Work[®] Institute

Orlando, Florida | July 16–18, 2025

USD **\$799.00**

[Register Now](#)

\$769.00 per person for teams of 5 or more



Contact Us.

Overview

Build school culture where learning thrives

“After several months of research and dialogue with practitioners throughout the nation, it became apparent that the hype was real. PLCs . . . are being used by schools and districts of all sizes and demographics to make significant impacts on student achievement.”

—*Evaluating Professional Learning Communities: Final Report*
An APQC® Education Benchmarking Project

The Professional Learning Communities at Work® process is increasingly recognized as the most powerful strategy for sustained, substantive school improvement. This institute gives you and your team the knowledge and tools to implement this powerful process in your school or district.

For three days, you will have the opportunity to network with some of the most insightful minds in education. The presenters, all educators who have successfully led schools through the PLC process, are accessible to you throughout the event.

The program includes time for questions during the breakout sessions, a panel of experts to address questions from the audience, and time for teams to reflect and seek the advice of the presenters. At the end of team time, you will focus on next action steps, with presenters on hand to guide you.

For those just beginning to explore PLCs, this is an excellent way to build your knowledge base. For those who are already involved in deep implementation, this institute is the perfect opportunity to revisit your mission, introduce new team members to the process, and get answers to new questions.

As you delve deep into the three big ideas of a PLC—focus on learning, build a collaborative culture, and results orientation—you will gain specific, practical, and inspiring strategies for transforming your school or district into a place where all students learn at high levels.

Learn from leading experts



Keynote speakers



Contact Us.



Tim Brown



Timothy D. Kanold



Mike Mattos



Anthony Muhammad



Maria Nielsen



Peter Noonan



Regina Stephens Owens



Jeanne Spiller



Eric Twadell



Contact Us.

Schedule

Accommodations

Events reach capacity quickly. Please confirm your registration before making travel plans.

Parking information:

Orange County Convention Center - \$22.50 per entry (no in/out privileges)

Rosen Centre - Valet \$40- self parking \$14 (in/out privileges)

Rosen Plaza - Valet \$35 - self parking \$11 (in/out privileges)

Hyatt Regency - Valet \$39.75 - self parking \$28.50 (in/out privileges)

All rates are per day and subject to change.

In order to receive the discounted hotel room rates, please mention Solution Tree.

After the deadline listed below, rates will be determined by the hotel.

Primary Hotel

Rosen Plaza Hotel - SOLD OUT

9700 International Drive

Orlando, Florida 32819

407.996.9700

Discounted Rate: (single or double) \$199 per night

Deadline: June 24, 2025, or until group rate is sold out

Alternate Hotel 1 - SOLD OUT

Rosen Centre

9840 International Dr

Orlando, Florida 32819

407.996.9840

Discounted Rate: (single or double) \$199 per night

Deadline: June 24, 2025, or until group rate is sold out

Alternate Hotel 2

Hyatt Regency Orlando - SOLD OUT **June 17th availability only**

9801 International Drive

Orlando, Florida 32819

844.208.4613

Discounted Rate: (single or double) \$259 per night

Deadline: June 24, 2025, or until group rate is sold out



Contact Us.

[Online Reservations](#)

Alternate Hotel 3

Rosen Inn at Pointe Orlando

9000 International Dr

Orlando, Florida 32819

407.996.8585

Please mention Solution Tree PLC at Work Conference Overflow
or booking ID #76025

Discounted Rate: (double) \$109 per night

\$10.00 plus tax, per person, will be added for each additional adult sharing

Deadline: June 8, 2025, or until group rate is sold out

[Online Reservations](#)

Event Reviews

“The slide on the setup of collaborative teams was excellent and gave me some ideas of how to set up our school to make it a true PLC instead of a pseudo PLC.”

— Paul Gagnon, principal, Page High School, Arizona

“The great opening sent us off to a positive and energetic day filled with great gems to take back to our schools.”

— Erin Barr, teacher, Kingston Elementary School, California

“The presenters were very knowledgeable about the topic, and when they were presented with challenging questions, they had ideas and other suggestions to those seeking solutions.”

— Martha Loera-Olivas, program coordinator, Aurora Public Schools, Colorado

“The various breakout sessions gave choices for people to attend based on their building needs and interests.”

— Eric Cobb, teacher, El Dorado Elementary School, California



Contact Us.

“The opportunity to network with other educators who are on the PLC journey was valuable. The expertise of the presenters was also very helpful. I also appreciated the cohesive message regardless of which breakout session I attended.”

— *Pat Foster, principal, Oskaloosa Elementary School, Kansas*

More Details

Venue

**Orange County Convention Center
West Building**
9800 International Dr
Orlando, Florida

Participation Information

You will receive a certificate of participation 6 weeks after the event concludes. Please check with your department of education for CEU availability.

On-Site Solution Tree Book Co-op Discounts

- Buy 5 or more Solution Tree titles or resources and receive 30% off and free shipping
- On-site book co-op open daily throughout the event

Discounts above are for on-site purchases only. Does not include any non-Solution Tree product, toolkit, or sale table items. Purchase orders and credit cards accepted. We now accept Apple, Google and Samsung Pay onsite. Continental US only.



Contact Us.

Additional Information

Product code: **CFF820**

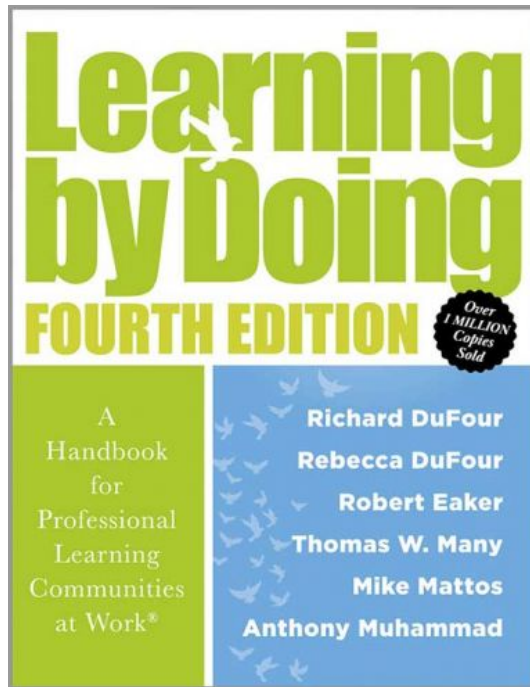
[Five Reasons to Attend a Solution Tree Event](#) (PDF)

[A Letter to Your Boss](#) (DOC)



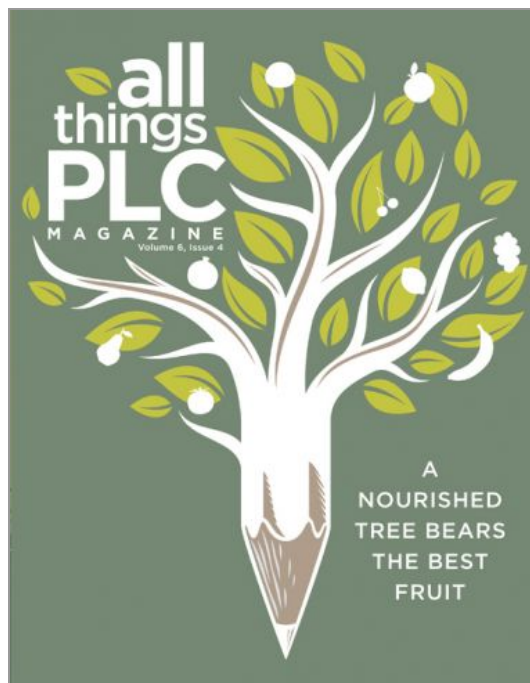
Contact Us.

Included with your registration



Learning by Doing

The fourth edition of this comprehensive action guide provides new strategies for leveraging PLC for a highly effective multitiered system of supports, expert-led guidance on school culture, and a deeper discussion on connecting school improvement to the mission of helping all students succeed.



AllThingsPLC Magazine Single Event Issue



Contact Us.

AllThingsPLC Magazine is a must-have for emerging and veteran professional learning communities (PLCs). Each issue includes PLC research, inspiration, fixes, how-tos, and more.



Event Journal

We're enhancing your event experience. In addition to providing presentations in digital format, Solution Tree is publishing retail-quality, perfect-bound notebooks expertly designed to support your learning. Any printed handouts or worksheets integrated into your sessions will continue to be provided.

Powered by 



0 Reviews

 [Write A Review](#)



[Contact Us.](#)

BE THE FIRST TO WRITE A REVIEW

Our Solutions ▼

[About Our Solutions](#)

[Assessment Collaborative](#)

[DNA Mathematics](#)

[Mathematics at Work™](#)

[PLC at Work®](#)

[Priority Schools in a PLC at Work®](#)

[RTI at Work™](#)

[Transforming School Culture](#)

[Wellness Solutions for Educators™](#)

[Evidence of Excellence](#)

[Contact Your Rep](#)

Books & Videos ▼

[About Our Books & Videos](#)

[Browse by Author](#)

[All Books & Videos](#)

[Bestsellers](#)

[New Releases](#)

[Coming Soon](#)

[PLC Magazine](#)

Events ▼

[About Our Events](#)

[All Events](#)

[Portable Events](#)

[Summits](#)

[Institutes](#)

[Workshops](#)



Contact Us.

[Stream an Event](#)

[Event Types](#)

[PD Services](#) ▼

[Request PD](#)

[On-Site PD](#)

[Virtual PD](#)

[Global PD Teams](#)

[Highly Effective Schools Accreditation](#)

[ProPath Needs Assessment](#)

[Avanti](#)

[Featured Presenters](#)

[Online PD Comparison](#)

[Free Resources](#) ▼

[Reproducibles & Study Guides](#)

[Webinars](#)

[All Things PLC](#)

[All Things Assessment](#)

[Video Library](#)

[Video Library](#)

[Blog](#)

[Podcasts](#)

[About Us](#) ▼

[Who we are](#)

[State Offices](#)

[News Center](#)

[The DuFour Award](#)

[Trade Shows](#)

[Careers](#)

[Knowledge Base](#)



Contact Us.

Connect with us



[About Us](#) | [Contact Us](#) | [Customer Service](#) | [Careers](#) | [Subscribe to Email Updates and News](#) | [Privacy Policy](#)

© 2025 Solution Tree, Inc. - 555 North Morton Street, Bloomington, Indiana 47404 - Tel: 812.336.7700 - Toll-free: 800.733.6786 - Fax: 812.336.7790



Contact Us.

#TuningIntoTalent

FAQ

REGISTER NOW

HOME

PROGRAM

SPEAKERS

TRAVEL & LODGING

ATTEND

EXHIBIT | SPONSOR

MORE

AASPA's 87th ANNUAL CONFERENCE

2025 Pre-Conference Sessions!

Tuesday, October 7

AM Pre-Conference Workshops: 9 am - 12 pm

With the All Access Registration you may choose 1 AM and 1 PM session.

1. Recruit & Retain in an Evolving Educational Landscape

Session Description Coming Soon!

2. Family Medical Leave Act (FMLA)

Presented by Barbara Erickson, Partner, Hodges, Loizzi, Eisenhammer, Rodick & Kohn LLP, Itasca, IL

Session Description Coming Soon!

3. Leveraging the 5 Shifts and Candidate Personas to Impact the Educator Shortage

Presented by Dr. Sara Skretta, Sr. Director of Accreditation, Placement & Licensure/Certification Officer, University of Nebraska - Lincoln, Lincoln, NE and Dr. Kelly Coash-Johnson, Executive Director, American Association of School Personnel Administrators (AASPA), Overland Park, KS

Using educator personas can be a valuable strategy for educator recruitment and retention. They can be used in strategic planning, systems review, and other processes related to recruitment and retention in your organization. This interactive session will engage participants in how to use personas in their human capital strategy program and provide practice and instruction on how to develop personas in your organization and strategies to elevate those reflections and findings into action.

4. Navigating Difficult Conversations with Emotional Intelligence

Presented by Jodie Graham, Executive Director of Human Resources, Dr. Jeffery Grassmeyer, Principal and JD Hunter, Principal, Ankeny Community School District, Ankeny, IA

In this interactive session, participants will learn how to navigate tough conversations with empathy, self-awareness and emotional intelligence (EI). Through practical strategies and real-life scenarios, attendees will explore how to stay calm, listen actively and express their thoughts constructively, ensuring that the conversation leads to positive outcomes. Participants will also learn how to recognize and manage their own emotional response, understand others' perspectives and resolve conflicts with respect and professionalism.

Whether you're handling feedback, addressing conflict, or managing misunderstandings, this session will empower you to communicate with emotional intelligence and make a meaningful impact.

5. Investigations & Documentation

Session Description Coming Soon!

6. Drink the Kool-AID - AI in the HR Office

Presented by Dr. Dale Fisher, Assistant Superintendent for Human Resources, Deerfield Public Schools District 109, Deerfield, IL and Dr. David Bruno, Assistant Superintendent for Human Resources, Glen Ellyn School District 41, Glen Ellyn, IL

Imagine a Human Resources department that works smarter, not harder. AI is transforming HR in K-12 education, and it's time to harness its full potential. Join us for an eye-opening professional development session where we'll explore how AI can be a game-changer for K-12 HR teams, streamlining processes and freeing up your time to focus on what truly matters: your people.

In our session, you'll gain actionable insights into implementing AI solutions designed specifically for K-12 HR, backed by real-world success stories. Don't miss this chance to step into the future of HR.

[BACK TO TOP](#)

PM Pre-Conference Workshops: 1 pm - 4 pm

With the All Access Registration you may choose 1 AM and 1 PM session.

7. Questions You Should Ask Before Firing an Employee

Presented by Brent Siler, Partner, Adams & Reese, LLP, Memphis, TN

One of the most common challenges for Human Resources professionals is advising your internal clients when they want to terminate an employee. How do you determine what the risk is? How do you know when to tell them no or tell them they need to get more documentation? How do you know when to give them the green light?

In this presentation, I will cover what employment counsel will ask you if you ask, "Can I fire this employee?" I will explain why I ask each question and what potential legal issue each one is designed to uncover, including the most common employment law risks and how to know if those risks are present in your situation. I will discuss how to use the information you receive, when to ask more questions, and how to know when to say no. I will cover the basics of disciplinary documentation and how to guide your managers to making good decisions to minimize the risk. We will discuss the role of Human Resources as the advisor and how to work with your managers to get them to make the right decisions. The goal of this presentation is to give you a system to use every time you have to consider a termination or significant disciplinary matter to help you make defensible decisions.

8. Hot Topics in School Law

Session Description Coming Soon!

9. Got Candidates in Low Places? Improve Recruitment, Retention, and Onboarding Culture by Starting at the Bottom.

Presented by Jamie West, Instructional Recruitment Partner, Lake County Schools, Tavares, FL

As Garth taught us all so well, friends in low places can be the secret to success that you never knew was possible. Let's use that mindset to help grow our recruiting strategy with a focus on overall retention after an awesome onboarding experience. With this workshop, y'all will interact with districts across the nation who are in the same boat. If past practice is pulling you down and new ideas are too tough to implement, let's work as a team to bring light to the low places in our processes. We will discover new ideas to ease the onboarding process and make it fun for candidates. We will discuss the retention-focused recruitment strategies that can be highly effective and time-efficient for your HR teams.

10. Title IX Updates

Presented by Jackie Gharapour Wernz, Legal Consultant, ECR Solutions LLC, Dallas, TX

Session Description Coming Soon!

11. Compensation Strategies

Session Description Coming Soon!

12. Strategic Staffing

Session Description Coming Soon!

BACK TO TOP

MEET THE TEAM | GET INVOLVED WITH AASPA| CANCELLATION POLICY

CONTACT US

7285 W. 132nd Street, Suite 100
Overland Park, KS 6621

913.327.1222
aaspa@aaspa.org

THE CONFERENCE

PROGRAM
SPEAKERS
EXHIBIT & SPONSOR

EXHIBIT & SPONSOR

CURRENT SPONSORS
BENEFITS
EXHIBIT HALL INFO

REGISTER NOW

BACK TO TOP

Please contact emily@aaspa.org with any registration questions.

#TuningIntoTalent

FAQ

[REGISTER NOW](#)[HOME](#)[PROGRAM](#)[SPEAKERS](#)[TRAVEL & LODGING](#)[ATTEND](#)[EXHIBIT | SPONSOR](#)[MORE](#)[DAILY VIDEOS](#)[CONFERENCE AGENDA](#)[PRE-CONFERENCE SESSIONS](#)[BREAKOUT SESSIONS](#)[EVENING RECEPTIONS](#)*live from Nashville*

OCTOBER 7 - 10, 2025

AASPA's 87th ANNUAL CONFERENCE

2025 PROGRAM OVERVIEW

The association's most important priority and commitment is to protect the health, well-being, and safety of all our members and participants. The AASPA 87th Annual Conference will take place over four days. Participants will be able to join a variety of sessions and safely interact with exhibitors, presenters and other participants. You can be assured that your time and experience will be well worth it.

TENTATIVE AGENDA AT A GLANCE

MONDAY, OCT 6

8:00 am – 5:00 pm Executive Board Meeting

3:30 pm – 5:30 pm Conference Registration

TUESDAY, OCT 7

WEDNESDAY, OCT 8

7:30 am – 5:30 pm Conference Registration
 8:00 am – 5:30 pm Information Desk Open
 9:00 am – 10:30 am AM Pre-Conference Workshops
 10:30 am – 10:45 am Networking Break
 10:45 am – 12:00 pm AM Pre-Conference Workshops
 12:00 pm – 1:00 pm Lunch on Own
 1:00 pm – 2:30 pm PM Pre-Conference Workshops
 2:30 pm – 2:45 pm Networking Break
 2:45 pm – 4:00 pm PM Pre-Conference Workshops
 4:15 pm – 5:15 pm Regional Meet & Greet
 5:30 pm – 6:30 pm First-Time Attendee Reception
 7:00 pm – 10:00 pm Welcome Reception

7:00 am – 5:00 pm Conference Registration
 8:00 am – 5:30 pm Information Desk Open
 7:00 am – 8:00 am Grab N Go Breakfast Available
 8:00 am – 9:30 am Opening Ceremony & Keynote
 9:30 am – 10:30 am Exhibit Hall Opening
 10:00 am – 10:30 am Networking Break
 10:30 am – 12:00 pm Ignite Sessions & Clinic Workshops
 12:00 pm – 1:45 pm Lunch on Own (Gift Card Provided by AASPA)
 1:45 pm – 4:30 pm Exhibit Hall & Consultants' Corner
 1:45 pm – 2:45 pm Ignite Sessions & Clinic Workshops
 2:45 pm – 3:30 pm Networking Break
 3:30 pm – 4:30 pm Ignite Sessions & Clinic Workshops
 3:30 pm – 4:30 pm Community Conversations/
 DEI Committee
 3:30 pm – 4:30 pm Solution Showcase
 4:30 pm – 6:00 pm Exhibit Hall Reception
 7:00 pm – 10:00 pm Networking in Nashville

THURSDAY, OCT 9

7:00 am – 4:00 pm Conference Registration
 8:00 am – 4:00 pm Information Desk Open
 7:00 am – 8:00 am Grab N Go Breakfast Available
 8:00 am – 9:30 am Keynote Speaker
 9:30 am – 10:15 am Networking Break
 9:30 am – 11:15 am Exhibit Hall & Consultants' Corner
 10:15 am – 11:15 am Ignite Sessions & Clinic Workshops
 10:15 am – 11:15 am Business Meeting
 11:15 am – 12:00 pm Exhibit Hall Closing, Prize Drawing
 12:00 pm – 1:30 pm Lunch on Own
 1:30 pm – 2:30 pm Ignite Sessions & Clinic Workshops
 2:30 pm – 2:45 pm Networking Break
 2:45 pm – 4:15 pm State Leaders Meeting
 2:45 pm – 4:15 pm Ignite Sessions & Clinic Workshops
 4:30 pm – 6:00 pm 2026 Conference Kickoff
 7:00 pm – 10:00 pm Equity in Action Reception

FRIDAY, OCT 10

7:00 am – 10:00 am Conference Registration
 9:30 am – 12:30 pm Information Desk Open
 7:00 am – 8:00 am Breakfast Buffet Available
 8:00 am – 10:45 pm Executive Board Meeting
 8:00 am – 9:00 am Ignite Sessions & Clinic Workshops
 9:15 am – 10:45 am Ignite Sessions & Clinic Workshops
 11:00 am – 12:15 pm Closing Ceremony & Keynote

[MEET THE TEAM](#) | [GET INVOLVED WITH AASPA](#) | [CANCELLATION POLICY](#)

CONTACT US

7285 W. 132nd Street, Suite 100
 Overland Park, KS 6621

913.327.1222

THE CONFERENCE
 PROGRAM

EXHIBIT & SPONSOR
 CURRENT SPONSORS
 BENEFITS

REGISTER NOW

BACK TO TOP



aaspa@aaspa.org

SPEAKERS EXHIBIT HALL INFO
EXHIBIT & SPONSOR

Please contact emily@aaspa.org with any registration questions.

Experience your own "we can do this!" moment — **Save your seat** ➔



[US/Global](#) ▼

[Sign In/Register](#)



[Our Solutions](#)

[Books & Videos](#)

[Events](#)

[PD](#)

[Digital Tools](#)

[Free Resources](#)

[About](#)

[Home](#) > [PLC at Work[®] Institute](#)

PLC at Work[®] Institute

Las Vegas, Nevada | June 24–26, 2025

USD **\$799.00**

[Register Now](#)

\$769.00 per person for teams of 5 or more

Overview

Build school culture where learning thrives

“After several months of research and dialogue with practitioners throughout the nation, it became apparent that the hype was real. PLCs . . . are being used by schools and districts of all sizes and demographics to make significant impacts on student achievement.”

—*Evaluating Professional Learning Communities: Final Report*
An APQC® Education Benchmarking Project

The Professional Learning Communities at Work® process is increasingly recognized as the most powerful strategy for sustained, substantive school improvement. This institute gives you and your team the knowledge and tools to implement this powerful process in your school or district.

For three days, you will have the opportunity to network with some of the most insightful minds in education. The presenters, all educators who have successfully led schools through the PLC process, are accessible to you throughout the event.

The program includes time for questions during the breakout sessions, a panel of experts to address questions from the audience, and time for teams to reflect and seek the advice of the presenters. At the end of team time, you will focus on next action steps, with presenters on hand to guide you.

For those just beginning to explore PLCs, this is an excellent way to build your knowledge base. For those who are already involved in deep implementation, this institute is the perfect opportunity to revisit your mission, introduce new team members to the process, and get answers to new questions.

As you delve deep into the three big ideas of a PLC—a focus on learning, building a collaborative culture, and results orientation—you will gain specific, practical, and inspiring strategies for transforming your school or district into a place where all students learn at high levels.

Learn from leading experts



Keynote speakers



Tim Brown



Eric Burns



Daniel Cohan



Luis F. Cruz



William M. Ferriter



Timothy D. Kanold



Jamie Nino



Cristi Parsons



Julie A. Schmidt



Jeanne Spiller

Schedule

Accommodations

Events reach capacity quickly. Please confirm your registration before making travel plans.

Parking Information: \$18 Self Parking

Primary Hotel

Caesars Palace

3570 S Las Vegas Blvd

Las Vegas, Nevada 89109

866.227.5944

Discounted Rate: \$199/night + \$45 Resort Fee/Night (Single/Double)

Deadline: June 2, 2025 or until group rate is sold out.

Online Reservations

Attendees may also ask for group code: SCSOL4

Event Reviews

“I have so many things to take back to my team! The sessions were really excellent and worth the trip! I have lots of new ideas that I have presented to my principal already.”

— *Erin McClellan, teacher, Peralta Elementary School, Arizona*

“Very informative conference! My school team was energized and walked away with concrete examples of how to expand our PLC process.”

— *Pat Kurtz, principal, Santa Margarita Elementary School, California*

“I learned so much about implementing PLCs in my district. This conference gave me all of the research and evidence to show how PLCs impact learning, not only for the students but for the staff as well.”

— *Stefanie Hill, curriculum director, Genoa Kingston CUSD #424, Illinois*

“The keynote speakers were wonderful, entertaining, inspiring, and informative. The audiovisuals were great, location spectacular, and the accommodations were superb.”

— Sue Larkins-Hall, teacher, Anne Wien Elementary School, Alaska

More Details

Venue

Caesars Palace

3570 S Las Vegas Blvd
Las Vegas, Nevada

Participation Information

You will receive a certificate of participation 6 weeks after the event concludes. Please check with your department of education for CEU availability.

On-Site Solution Tree Book Co-Op Discounts

- Buy 5 or more Solution Tree titles or resources and receive 30% off and free shipping
- On-site book co-op open daily throughout the event

Discounts above are for on-site purchases only. Does not include any non-Solution Tree product, toolkit, or sale table items. Purchase orders and credit cards accepted. We now accept Apple, Google and Samsung Pay onsite. Continental US only.

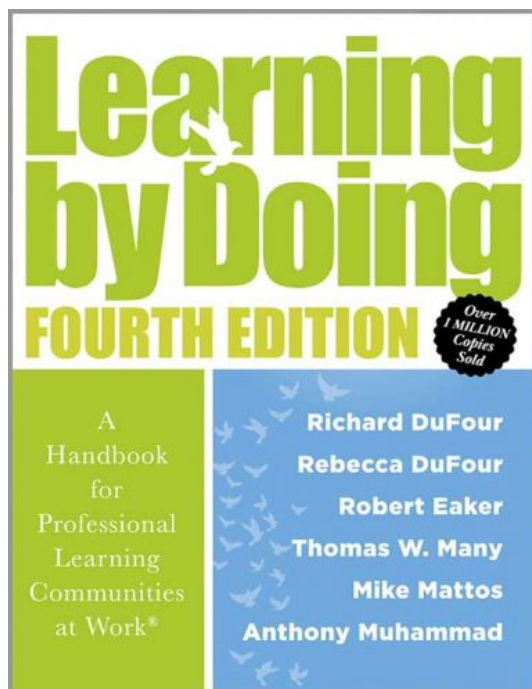
Additional Information

Product code: **CFF816**

[Five Reasons to Attend a Solution Tree Event \(PDF\)](#)

[A Letter to Your Boss \(DOC\)](#)

Included with your registration



Learning by Doing

The fourth edition of this comprehensive action guide provides new strategies for leveraging PLC for a highly effective multitiered system of supports, expert-led guidance on school culture, and a deeper discussion on connecting school improvement to the mission of helping all students succeed.



AllThingsPLC Magazine Single Event Issue

AllThingsPLC Magazine is a must-have for emerging and veteran professional learning communities (PLCs). Each issue includes PLC research, inspiration, fixes, how-tos, and more.



Event Journal

We're enhancing your event experience. In addition to providing presentations in digital format, Solution Tree is publishing retail-quality, perfect-bound notebooks expertly designed to support your learning. Any printed handouts or worksheets integrated into your sessions will continue to be provided.

Powered by 



0 Reviews



Write A Review



BE THE FIRST TO WRITE A REVIEW

Our Solutions ▼

[About Our Solutions](#)

[Assessment Collaborative](#)

[DNA Mathematics](#)

[Mathematics at Work™](#)

[PLC at Work®](#)

[Priority Schools in a PLC at Work®](#)

[RTI at Work™](#)

[Transforming School Culture](#)

[Wellness Solutions for Educators™](#)

[Evidence of Excellence](#)

[Contact Your Rep](#)

Books & Videos ▼

[About Our Books & Videos](#)

[Browse by Author](#)

[All Books & Videos](#)

[Bestsellers](#)

[New Releases](#)

[Coming Soon](#)

[PLC Magazine](#)

Events ▼

[About Our Events](#)

[All Events](#)

[Portable Events](#)

[Summits](#)

[Institutes](#)

[Workshops](#)

[Stream an Event](#)

[Event Types](#)

[PD Services](#) ▼

[Request PD](#)

[On-Site PD](#)

[Virtual PD](#)

[Global PD Teams](#)

[Highly Effective Schools Accreditation](#)

[ProPath Needs Assessment](#)

[Avanti](#)

[Featured Presenters](#)

[Online PD Comparison](#)

[Free Resources](#) ▼

[Reproducibles & Study Guides](#)

[Webinars](#)

[All Things PLC](#)

[All Things Assessment](#)

[Video Library](#)

[Video Library](#)

[Blog](#)

[Podcasts](#)

[About Us](#) ▼

[Who we are](#)

[State Offices](#)

[News Center](#)

[The DuFour Award](#)

[Trade Shows](#)

[Careers](#)

[Knowledge Base](#)

Tired of achievement gaps? Unite your educators at All Means All for real results — [Learn more](#) >



Solution Tree

Transform education worldwide to ensure learning for all



Solution Tree

Transform education worldwide to ensure learning for all



US/Global ▼

[Sign In/Register](#)



[Our Solutions](#)

[Books & Videos](#)

[Events](#)

[PD](#)

[Digital Tools](#)

[Free Resources](#)

[About](#)

[Home](#) > [PLC at Work® Institute](#)

PLC at Work® Institute

Orlando, Florida | July 16–18, 2025 USD **\$799.00**

[Register Now](#)

\$769.00 per person for teams of 5 or more

Overview

Build school culture where learning thrives

"After several months of research and dialogue with practitioners throughout the nation, it became apparent that the hype was real. PLCs . . . are being used by schools and districts of all sizes and demographics to make significant impacts on student achievement."

—*Evaluating Professional Learning Communities: Final Report*
An APQC® Education Benchmarking Project

The Professional Learning Communities at Work® process is increasingly recognized as the most powerful strategy for sustained, substantive school improvement. This institute gives you and your team the knowledge and tools to implement this powerful process in your school or district.

For three days, you will have the opportunity to network with some of the most insightful minds in education. The presenters, all educators who have successfully led schools through the PLC process, are accessible to you throughout the event.

The program includes time for questions during the breakout sessions, a panel of experts to address questions from the audience, and time for teams to reflect and seek the advice of the presenters. At the end of team time, you will focus on next action steps, with presenters on hand to guide you.

For those just beginning to explore PLCs, this is an excellent way to build your knowledge base. For those who are already involved in deep implementation, this institute is the perfect opportunity to revisit your mission, introduce new team members to the process, and get answers to new questions.

As you delve deep into the three big ideas of a PLC—focus on learning, build a collaborative culture, and results orientation—you will gain specific, practical, and inspiring strategies for transforming your school or district into a place where all students learn at high levels.

Learn from leading experts



Keynote speakers



Tim Brown



Timothy D. Kanold



Mike Mattos



Anthony Muhammad



Maria Nielsen



Peter Noonan



Regina Stephens Owens



Jeanne Spiller



Eric Twadell

Schedule

Accommodations

Events reach capacity quickly. Please confirm your registration before making travel plans.

Parking information:

Orange County Convention Center - \$22.50 per entry (no in/out privileges)

Rosen Centre - Valet \$40- self parking \$14 (in/out privileges)

Rosen Plaza - Valet \$35 - self parking \$11 (in/out privileges)

Hyatt Regency - Valet \$39.75 - self parking \$28.50 (in/out privileges)

All rates are per day and subject to change.

In order to receive the discounted hotel room rates, please mention Solution Tree.

After the deadline listed below, rates will be determined by the hotel.

Primary Hotel

Rosen Plaza Hotel - SOLD OUT

9700 International Drive
Orlando, Florida 32819
407.996.9700

Alternate Hotel 1 - SOLD OUT

Rosen Centre

9840 International Dr
Orlando, Florida 32819
407.996.9840

Discounted Rate: (single or double) \$199 per night **Discounted Rate:** (single or double) \$199 per night

Deadline: June 24, 2025, or until group rate is sold out **Deadline:** June 24, 2025, or until group rate is sold out

Alternate Hotel 2

Hyatt Regency Orlando - SOLD OUT June 17th availability only

9801 International Drive
Orlando, Florida 32819
844.208.4613

Discounted Rate: (single or double) \$259 per night
Deadline: June 24, 2025, or until group rate is sold out

[Online Reservations](#)

Alternate Hotel 3

Rosen Inn at Pointe Orlando

9000 International Dr
Orlando, Florida 32819
407.996.8585
Please mention Solution Tree PLC at Work Conference Overflow
or booking ID #76025

Discounted Rate: (double) \$109 per night
\$10.00 plus tax, per person, will be added for each additional adult sharing
Deadline: June 8, 2025, or until group rate is sold out

[Online Reservations](#)

Event Reviews

“The slide on the setup of collaborative teams was excellent and gave me some ideas of how to set up our school to make it a true PLC instead of a pseudo PLC.”

— *Paul Gagnon, principal, Page High School, Arizona*

“The great opening sent us off to a positive and energetic day filled with great gems to take back to our schools.”

— *Erin Barr, teacher, Kingston Elementary School, California*

“The presenters were very knowledgeable about the topic, and when they were presented with challenging questions, they had ideas and other suggestions to those seeking solutions.”

— *Martha Loera-Olivas, program coordinator, Aurora Public Schools, Colorado*

“The various breakout sessions gave choices for people to attend based on their building needs and interests.”

— *Eric Cobb, teacher, El Dorado Elementary School, California*

“The opportunity to network with other educators who are on the PLC journey was valuable. The expertise of the presenters was also very helpful. I also appreciated the cohesive message regardless of which breakout session I attended.”

— *Pat Foster, principal, Oskaloosa Elementary School, Kansas*

More Details

Venue

Orange County Convention Center
West Building
9800 International Dr
Orlando, Florida

Participation Information

You will receive a certificate of participation 6 weeks after the event concludes. Please check with your department of education for CEU availability.

On-Site Solution Tree Book Co-op Discounts

- Buy 5 or more Solution Tree titles or resources and receive 30% off and free shipping
- On-site book co-op open daily throughout the event

Discounts above are for on-site purchases only. Does not include any non-Solution Tree product, toolkit, or sale table items. Purchase orders and credit cards accepted. We now accept Apple, Google and Samsung Pay onsite. Continental US only.

Additional Information

Product code: **CFF820**

This event is eligible as a course credit through the University of Lynchburg. [Click here to learn more.](#)

[Five Reasons to Attend a Solution Tree Event \(PDF\)](#)

[A Letter to Your Boss \(DOC\)](#)

Tired of achievement gaps? Unite your educators at All Means All for real results — [Learn more](#) ➤



Solution Tree

Transform education worldwide to ensure learning for all



Solution Tree
Transform education worldwide to ensure learning for all



[US/Global](#) ▼

[Sign In/Register](#)



[Our Solutions](#)

[Books & Videos](#)

[Events](#)

[PD](#)

[Digital Tools](#)

[Free Resources](#)

[About](#)

[Home](#) > [Events](#) > PLC at Work® Institute

PLC at Work® Institute



[Contact Us.](#)

Orlando, Florida | July 16–18, 2025 ^{USD} **\$799.00** [Register Now](#)

\$769.00 per person for teams of 5 or more

Overview

Build school culture where learning thrives

“After several months of research and dialogue with practitioners throughout the nation, it became apparent that the hype was real. PLCs . . . are being used by schools and districts of all sizes and demographics to make significant impacts on student achievement.”

—*Evaluating Professional Learning Communities: Final Report*
An APQC® Education Benchmarking Project

The Professional Learning Communities at Work® process is increasingly recognized as the most powerful strategy for sustained, substantive school improvement. This institute gives you and your team the knowledge and tools to implement this powerful process in your school or district.

For three days, you will have the opportunity to network with some of the most insightful minds in education. The presenters, all educators who have successfully led schools through the PLC process, are accessible to you throughout the event.

The program includes time for questions during the breakout sessions, a panel of experts to address questions from the audience, and time for teams to reflect and seek the advice of the presenters. At the end of team time, you will focus on next action steps, with presenters on hand to guide you.


For those just beginning to explore PLCs, this is an excellent way to build your knowledge base. For those who are already involved in deep implementation, this institute is the perfect opportunity to revisit your mission, introduce new team members to the process, and get answer new questions.



Contact Us.

As you delve deep into the three big ideas of a PLC—focus on learning, build a collaborative culture, and results orientation—you will gain specific, practical, and inspiring strategies for transforming your school or district into a place where all students learn at high levels.

Learn from leading experts

 Keynote speakers



Tim Brown



Timothy D. Kanold



Mike Mattos



Anthony Muhammad



Maria Nielsen



Peter Noonan



Regina Stephens Owens



Jeanne Spiller



Eric Twadell



Contact Us.

Schedule

Accommodations

Events reach capacity quickly. Please confirm your registration before making travel plans.

Parking information:

Orange County Convention Center - \$22.50 per entry (no in/out privileges)

Rosen Centre - Valet \$40- self parking \$14 (in/out privileges)

Rosen Plaza - Valet \$35 - self parking \$11 (in/out privileges)

Hyatt Regency - Valet \$39.75 - self parking \$28.50 (in/out privileges)

All rates are per day and subject to change.

In order to receive the discounted hotel room rates, please mention Solution Tree.

After the deadline listed below, rates will be determined by the hotel.

Primary Hotel

Rosen Plaza Hotel - SOLD OUT

9700 International Drive

Orlando, Florida 32819

407.996.9700

Alternate Hotel 1 - SOLD OUT

Rosen Centre

9840 International Dr

Orlando, Florida 32819

407.996.9840

Discounted Rate: (single or double) \$199 per night **Discounted Rate:** (single or double) \$199 per night

Deadline: June 24, 2025, or until group rate is sold out **Deadline:** June 24, 2025, or until group rate is sold out

Alternate Hotel 2

Hyatt Regency Orlando - SOLD OUT June 17th availability only

9801 International Drive

Orlando, Florida 32819

844.208.4613

Alternate Hotel 3

Rosen Inn at Pointe Orlando

9000 International Dr

Orlando, Florida 32819

407.996.8585

Please mention Solution Tree PLC at Work Conference Overflow
or booking ID #76025



Contact Us.

Discounted Rate: (single or double) \$259 per night
Deadline: June 24, 2025, or until group rate is sold out

[Online Reservations](#)

Discounted Rate: (double) \$109 per night
\$10.00 plus tax, per person, will be added for each additional adult sharing
Deadline: June 8, 2025, or until group rate is sold out

[Online Reservations](#)

Event Reviews

“The slide on the setup of collaborative teams was excellent and gave me some ideas of how to set up our school to make it a true PLC instead of a pseudo PLC.”

— *Paul Gagnon, principal, Page High School, Arizona*

“The great opening sent us off to a positive and energetic day filled with great gems to take back to our schools.”

— *Erin Barr, teacher, Kingston Elementary School, California*

“The presenters were very knowledgeable about the topic, and when they were presented with challenging questions, they had ideas and other suggestions to those seeking solutions.”

— *Martha Loera-Olivas, program coordinator, Aurora Public Schools, Colorado*

“The various breakout sessions gave choices for people to attend based on their building needs and interests.”

— *Eric Cobb, teacher, El Dorado Elementary School, California*

“The opportunity to network with other educators who are on the PLC journey was valuable. The expertise of the presenters was also very helpful. I also appreciated the cohesive message regardless of which breakout session I attended.”

— *Pat Foster, principal, Oskaloosa Elementary School, Kansas*



Contact Us.

More Details

Venue

**Orange County Convention Center
West Building**
9800 International Dr
Orlando, Florida

Participation Information

You will receive a certificate of participation 6 weeks after the event concludes. Please check with your department of education for CEU availability.

On-Site Solution Tree Book Co-op Discounts

- Buy 5 or more Solution Tree titles or resources and receive 30% off and free shipping
- On-site book co-op open daily throughout the event

Discounts above are for on-site purchases only. Does not include any non-Solution Tree product, toolkit, or sale table items. Purchase order and credit cards accepted. We now accept Apple, Google and Samsung Pay onsite. Continental US only.



Contact Us.

Additional Information

Product code: **CFF820**

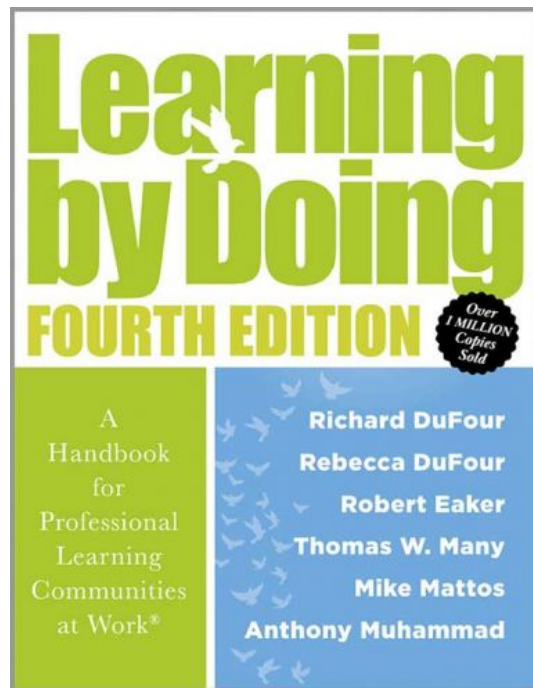
[Five Reasons to Attend a Solution Tree Event](#) (PDF)

[A Letter to Your Boss](#) (DOC)



Contact Us.

Included with your registration

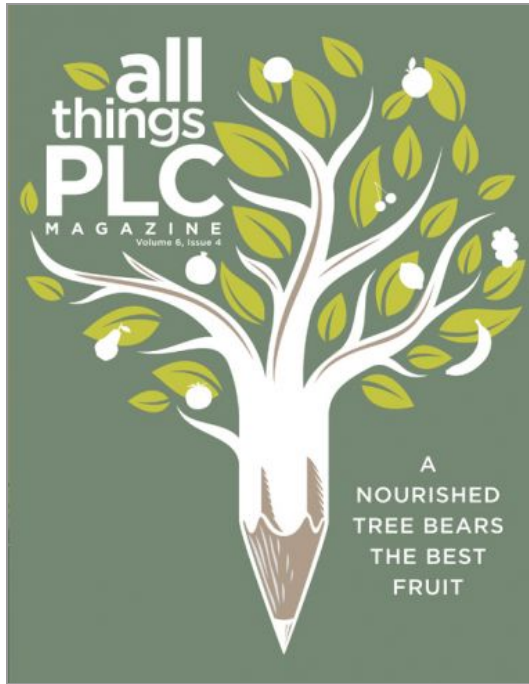


Learning by Doing

The fourth edition of this comprehensive action guide provides new strategies for leveraging PLC for a highly effective multitiered system of supports, expert-led guidance on school culture, and a deeper discussion on connecting school improvement to the mission of helping all students succeed.



Contact Us.



AllThingsPLC Magazine Single Event Issue

AllThingsPLC Magazine is a must-have for emerging and veteran professional learning communities (PLCs). Each issue includes PLC research, inspiration, fixes, how-tos, and more.



Contact Us.



Event Journal

We're enhancing your event experience. In addition to providing presentations in digital format, Solution Tree is publishing retail-quality, perfect-bound notebooks expertly designed to support your learning. Any printed handouts or worksheets integrated into your sessions will continue to be provided.

Our Solutions ▼

[About Our Solutions](#)

[Assessment Collaborative](#)

[DNA Mathematics](#)

[Mathematics at Work™](#)

[PLC at Work®](#)

[Priority Schools in a PLC at Work®](#)



Contact Us.

[RTI at Work™](#)

[Transforming School Culture](#)

[Wellness Solutions for Educators™](#)

[Evidence of Excellence](#)

[Contact Your Rep](#)

[Books & Videos](#) ▾

[About Our Books & Videos](#)

[Browse by Author](#)

[All Books & Videos](#)

[Bestsellers](#)

[New Releases](#)

[Coming Soon](#)

[PLC Magazine](#)

[Events](#) ▾

[About Our Events](#)

[All Events](#)

[Portable Events](#)

[Summits](#)

[Institutes](#)

[Workshops](#)

[Stream an Event](#)

[Event Types](#)



Contact Us.

PD Services ▼

[Request PD](#)

[On-Site PD](#)

[Virtual PD](#)

[Global PD Teams](#)

[Highly Effective Schools Accreditation](#)

[ProPath Needs Assessment](#)

[Avanti](#)

[Featured Presenters](#)

[Online PD Comparison](#)

Free Resources ▼

[Reproducibles & Study Guides](#)

[Webinars](#)

[All Things PLC](#)

[All Things Assessment](#)

[Video Library](#)

[Video Library](#)

[Blog](#)

[Podcasts](#)

About Us ▼

 [Contact Us.](#)

[Who we are](#)

[State Offices](#)

[News Center](#)

[The DuFour Award](#)

[Trade Shows](#)

[Careers](#)

[Knowledge Base](#)

Connect with us



[About Us](#) | [Contact Us](#) | [Customer Service](#) | [Careers](#) | [Subscribe to Email Updates and News](#) | [Privacy Policy](#)

© 2025 Solution Tree, Inc. - 555 North Morton Street, Bloomington, Indiana 47404 - Tel: 812.336.7700 - Toll-free: 800.733.6786 - Fax: 812.336.7790

 [Contact Us.](#)

Tired of achievement gaps? Unite your educators at All Means All for real results — [Learn more](#) >



Solution Tree

Transform education worldwide to ensure learning for all



[US/Global](#) ▼

[Sign In/Register](#)



[Our Solutions](#)

[Books & Videos](#)

[Events](#)

[PD](#)

[Digital Tools](#)

[Free Resources](#)

[About](#)

[Home](#) > [PLC at Work[®] Institute](#)

PLC at Work[®] Institute

Orlando, Florida | July 16–18, 2025

USD **\$799.00**

[Register Now](#)

\$769.00 per person for teams of 5 or more



Contact Us.

Overview

Build school culture where learning thrives

“After several months of research and dialogue with practitioners throughout the nation, it became apparent that the hype was real. PLCs . . . are being used by schools and districts of all sizes and demographics to make significant impacts on student achievement.”

—*Evaluating Professional Learning Communities: Final Report*
An APQC® Education Benchmarking Project

The Professional Learning Communities at Work® process is increasingly recognized as the most powerful strategy for sustained, substantive school improvement. This institute gives you and your team the knowledge and tools to implement this powerful process in your school or district.

For three days, you will have the opportunity to network with some of the most insightful minds in education. The presenters, all educators who have successfully led schools through the PLC process, are accessible to you throughout the event.

The program includes time for questions during the breakout sessions, a panel of experts to address questions from the audience, and time for teams to reflect and seek the advice of the presenters. At the end of team time, you will focus on next action steps, with presenters on hand to guide you.

For those just beginning to explore PLCs, this is an excellent way to build your knowledge base. For those who are already involved in deep implementation, this institute is the perfect opportunity to revisit your mission, introduce new team members to the process, and get answers to new questions.

As you delve deep into the three big ideas of a PLC—focus on learning, build a collaborative culture, and results orientation—you will gain specific, practical, and inspiring strategies for transforming your school or district into a place where all students learn at high levels.

Learn from leading experts



Keynote speakers



Contact Us.



Tim Brown



Timothy D. Kanold



Mike Mattos



Anthony Muhammad



Maria Nielsen



Peter Noonan



Regina Stephens Owens



Jeanne Spiller



Eric Twadell



Contact Us.

Schedule

Accommodations

Events reach capacity quickly. Please confirm your registration before making travel plans.

Parking information:

Orange County Convention Center - \$22.50 per entry (no in/out privileges)

Rosen Centre - Valet \$40- self parking \$14 (in/out privileges)

Rosen Plaza - Valet \$35 - self parking \$11 (in/out privileges)

Hyatt Regency - Valet \$39.75 - self parking \$28.50 (in/out privileges)

All rates are per day and subject to change.

In order to receive the discounted hotel room rates, please mention Solution Tree.

After the deadline listed below, rates will be determined by the hotel.

Primary Hotel

Rosen Plaza Hotel - SOLD OUT

9700 International Drive

Orlando, Florida 32819

407.996.9700

Discounted Rate: (single or double) \$199 per night

Deadline: June 24, 2025, or until group rate is sold out

Alternate Hotel 1 - SOLD OUT

Rosen Centre

9840 International Dr

Orlando, Florida 32819

407.996.9840

Discounted Rate: (single or double) \$199 per night

Deadline: June 24, 2025, or until group rate is sold out

Alternate Hotel 2

Hyatt Regency Orlando - SOLD OUT June 17th availability only

9801 International Drive

Orlando, Florida 32819

844.208.4613

Discounted Rate: (single or double) \$259 per night

Deadline: June 24, 2025, or until group rate is sold out



Contact Us.

[Online Reservations](#)

Alternate Hotel 3

Rosen Inn at Pointe Orlando

9000 International Dr

Orlando, Florida 32819

407.996.8585

Please mention Solution Tree PLC at Work Conference Overflow
or booking ID #76025

Discounted Rate: (double) \$109 per night

\$10.00 plus tax, per person, will be added for each additional adult sharing

Deadline: June 8, 2025, or until group rate is sold out

[Online Reservations](#)

Event Reviews

“The slide on the setup of collaborative teams was excellent and gave me some ideas of how to set up our school to make it a true PLC instead of a pseudo PLC.”

— Paul Gagnon, principal, Page High School, Arizona

“The great opening sent us off to a positive and energetic day filled with great gems to take back to our schools.”

— Erin Barr, teacher, Kingston Elementary School, California

“The presenters were very knowledgeable about the topic, and when they were presented with challenging questions, they had ideas and other suggestions to those seeking solutions.”

— Martha Loera-Olivas, program coordinator, Aurora Public Schools, Colorado

“The various breakout sessions gave choices for people to attend based on their building needs and interests.”

— Eric Cobb, teacher, El Dorado Elementary School, California



Contact Us.

“The opportunity to network with other educators who are on the PLC journey was valuable. The expertise of the presenters was also very helpful. I also appreciated the cohesive message regardless of which breakout session I attended.”

— *Pat Foster, principal, Oskaloosa Elementary School, Kansas*

More Details

Venue

**Orange County Convention Center
West Building**
9800 International Dr
Orlando, Florida

Participation Information

You will receive a certificate of participation 6 weeks after the event concludes. Please check with your department of education for CEU availability.

On-Site Solution Tree Book Co-op Discounts

- Buy 5 or more Solution Tree titles or resources and receive 30% off and free shipping
- On-site book co-op open daily throughout the event

Discounts above are for on-site purchases only. Does not include any non-Solution Tree product, toolkit, or sale table items. Purchase orders and credit cards accepted. We now accept Apple, Google and Samsung Pay onsite. Continental US only.



Contact Us.

Additional Information

Product code: **CFF820**

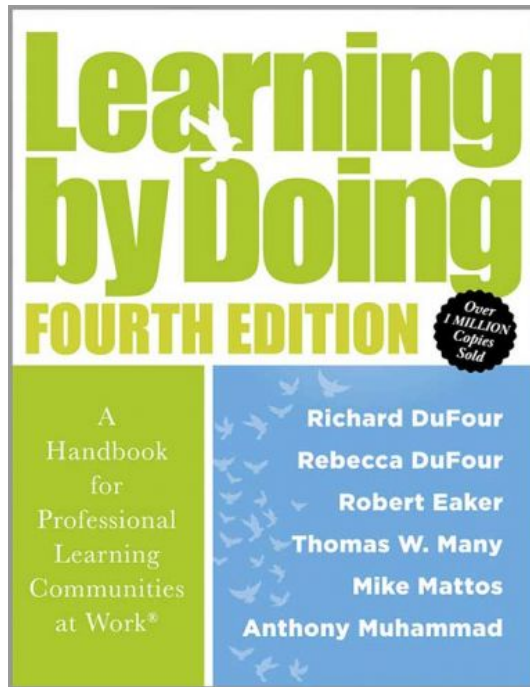
[Five Reasons to Attend a Solution Tree Event](#) (PDF)

[A Letter to Your Boss](#) (DOC)



Contact Us.

Included with your registration



Learning by Doing

The fourth edition of this comprehensive action guide provides new strategies for leveraging PLC for a highly effective multitiered system of supports, expert-led guidance on school culture, and a deeper discussion on connecting school improvement to the mission of helping all students succeed.



AllThingsPLC Magazine Single Event Issue



Contact Us.

AllThingsPLC Magazine is a must-have for emerging and veteran professional learning communities (PLCs). Each issue includes PLC research, inspiration, fixes, how-tos, and more.



Event Journal

We're enhancing your event experience. In addition to providing presentations in digital format, Solution Tree is publishing retail-quality, perfect-bound notebooks expertly designed to support your learning. Any printed handouts or worksheets integrated into your sessions will continue to be provided.

Powered by 



0 Reviews

 [Write A Review](#)



[Contact Us.](#)

BE THE FIRST TO WRITE A REVIEW

Our Solutions ▼

[About Our Solutions](#)

[Assessment Collaborative](#)

[DNA Mathematics](#)

[Mathematics at Work™](#)

[PLC at Work®](#)

[Priority Schools in a PLC at Work®](#)

[RTI at Work™](#)

[Transforming School Culture](#)

[Wellness Solutions for Educators™](#)

[Evidence of Excellence](#)

[Contact Your Rep](#)

Books & Videos ▼

[About Our Books & Videos](#)

[Browse by Author](#)

[All Books & Videos](#)

[Bestsellers](#)

[New Releases](#)

[Coming Soon](#)

[PLC Magazine](#)

Events ▼

[About Our Events](#)

[All Events](#)

[Portable Events](#)

[Summits](#)

[Institutes](#)

[Workshops](#)



Contact Us.

[Stream an Event](#)

[Event Types](#)

[PD Services](#) ▼

[Request PD](#)

[On-Site PD](#)

[Virtual PD](#)

[Global PD Teams](#)

[Highly Effective Schools Accreditation](#)

[ProPath Needs Assessment](#)

[Avanti](#)

[Featured Presenters](#)

[Online PD Comparison](#)

[Free Resources](#) ▼

[Reproducibles & Study Guides](#)

[Webinars](#)

[All Things PLC](#)

[All Things Assessment](#)

[Video Library](#)

[Video Library](#)

[Blog](#)

[Podcasts](#)

[About Us](#) ▼

[Who we are](#)

[State Offices](#)

[News Center](#)

[The DuFour Award](#)

[Trade Shows](#)

[Careers](#)

[Knowledge Base](#)



Contact Us.

Connect with us



[About Us](#) | [Contact Us](#) | [Customer Service](#) | [Careers](#) | [Subscribe to Email Updates and News](#) | [Privacy Policy](#)

© 2025 Solution Tree, Inc. - 555 North Morton Street, Bloomington, Indiana 47404 - Tel: 812.336.7700 - Toll-free: 800.733.6786 - Fax: 812.336.7790



Contact Us.

Experience your own "we can do this!" moment — **Save your seat** ➔



[US/Global](#) ▼

[Sign In/Register](#)



[Our Solutions](#)

[Books & Videos](#)

[Events](#)

[PD](#)

[Digital Tools](#)

[Free Resources](#)

[About](#)

[Home](#) > [PLC at Work[®] Institute](#)

PLC at Work[®] Institute

Las Vegas, Nevada | June 24–26, 2025

USD **\$799.00**

[Register Now](#)

\$769.00 per person for teams of 5 or more

Overview

Build school culture where learning thrives

“After several months of research and dialogue with practitioners throughout the nation, it became apparent that the hype was real. PLCs . . . are being used by schools and districts of all sizes and demographics to make significant impacts on student achievement.”

—*Evaluating Professional Learning Communities: Final Report*
An APQC® Education Benchmarking Project

The Professional Learning Communities at Work® process is increasingly recognized as the most powerful strategy for sustained, substantive school improvement. This institute gives you and your team the knowledge and tools to implement this powerful process in your school or district.

For three days, you will have the opportunity to network with some of the most insightful minds in education. The presenters, all educators who have successfully led schools through the PLC process, are accessible to you throughout the event.

The program includes time for questions during the breakout sessions, a panel of experts to address questions from the audience, and time for teams to reflect and seek the advice of the presenters. At the end of team time, you will focus on next action steps, with presenters on hand to guide you.

For those just beginning to explore PLCs, this is an excellent way to build your knowledge base. For those who are already involved in deep implementation, this institute is the perfect opportunity to revisit your mission, introduce new team members to the process, and get answers to new questions.

As you delve deep into the three big ideas of a PLC—a focus on learning, building a collaborative culture, and results orientation—you will gain specific, practical, and inspiring strategies for transforming your school or district into a place where all students learn at high levels.

Learn from leading experts



Keynote speakers



Tim Brown



Eric Burns



Daniel Cohan



Luis F. Cruz



William M. Ferriter



Timothy D. Kanold



Jamie Nino



Cristi Parsons



Julie A. Schmidt



Jeanne Spiller

Schedule

Accommodations

Events reach capacity quickly. Please confirm your registration before making travel plans.

Parking Information: \$18 Self Parking

Primary Hotel

Caesars Palace

3570 S Las Vegas Blvd

Las Vegas, Nevada 89109

866.227.5944

Discounted Rate: \$199/night + \$45 Resort Fee/Night (Single/Double)

Deadline: June 2, 2025 or until group rate is sold out.

Online Reservations

Attendees may also ask for group code: SCSOL4

Event Reviews

“I have so many things to take back to my team! The sessions were really excellent and worth the trip! I have lots of new ideas that I have presented to my principal already.”

— *Erin McClellan, teacher, Peralta Elementary School, Arizona*

“Very informative conference! My school team was energized and walked away with concrete examples of how to expand our PLC process.”

— *Pat Kurtz, principal, Santa Margarita Elementary School, California*

“I learned so much about implementing PLCs in my district. This conference gave me all of the research and evidence to show how PLCs impact learning, not only for the students but for the staff as well.”

— *Stefanie Hill, curriculum director, Genoa Kingston CUSD #424, Illinois*

“The keynote speakers were wonderful, entertaining, inspiring, and informative. The audiovisuals were great, location spectacular, and the accommodations were superb.”

— Sue Larkins-Hall, teacher, Anne Wien Elementary School, Alaska

More Details

Venue

Caesars Palace

3570 S Las Vegas Blvd
Las Vegas, Nevada

Participation Information

You will receive a certificate of participation 6 weeks after the event concludes. Please check with your department of education for CEU availability.

On-Site Solution Tree Book Co-Op Discounts

- Buy 5 or more Solution Tree titles or resources and receive 30% off and free shipping
- On-site book co-op open daily throughout the event

Discounts above are for on-site purchases only. Does not include any non-Solution Tree product, toolkit, or sale table items. Purchase orders and credit cards accepted. We now accept Apple, Google and Samsung Pay onsite. Continental US only.

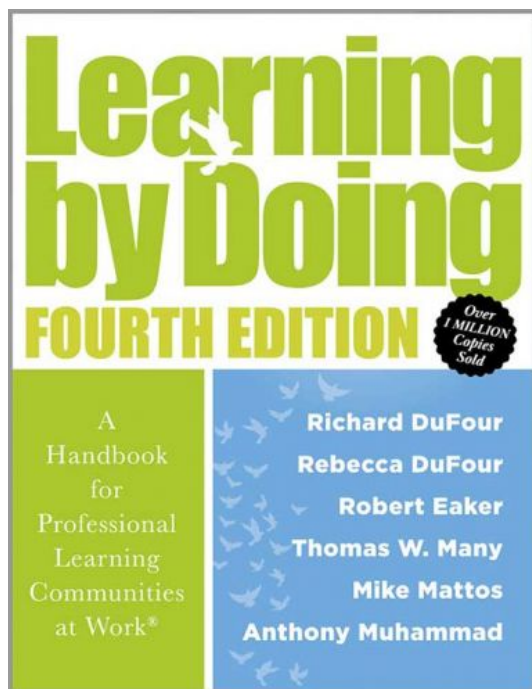
Additional Information

Product code: **CFF816**

[Five Reasons to Attend a Solution Tree Event \(PDF\)](#)

[A Letter to Your Boss \(DOC\)](#)

Included with your registration



Learning by Doing

The fourth edition of this comprehensive action guide provides new strategies for leveraging PLC for a highly effective multitiered system of supports, expert-led guidance on school culture, and a deeper discussion on connecting school improvement to the mission of helping all students succeed.



AllThingsPLC Magazine Single Event Issue

AllThingsPLC Magazine is a must-have for emerging and veteran professional learning communities (PLCs). Each issue includes PLC research, inspiration, fixes, how-tos, and more.



Event Journal

We're enhancing your event experience. In addition to providing presentations in digital format, Solution Tree is publishing retail-quality, perfect-bound notebooks expertly designed to support your learning. Any printed handouts or worksheets integrated into your sessions will continue to be provided.

Powered by 



0 Reviews



Write A Review



BE THE FIRST TO WRITE A REVIEW

Our Solutions ▼

[About Our Solutions](#)

[Assessment Collaborative](#)

[DNA Mathematics](#)

[Mathematics at Work™](#)

[PLC at Work®](#)

[Priority Schools in a PLC at Work®](#)

[RTI at Work™](#)

[Transforming School Culture](#)

[Wellness Solutions for Educators™](#)

[Evidence of Excellence](#)

[Contact Your Rep](#)

Books & Videos ▼

[About Our Books & Videos](#)

[Browse by Author](#)

[All Books & Videos](#)

[Bestsellers](#)

[New Releases](#)

[Coming Soon](#)

[PLC Magazine](#)

Events ▼

[About Our Events](#)

[All Events](#)

[Portable Events](#)

[Summits](#)

[Institutes](#)

[Workshops](#)

[Stream an Event](#)

[Event Types](#)

[PD Services](#) ▼

[Request PD](#)

[On-Site PD](#)

[Virtual PD](#)

[Global PD Teams](#)

[Highly Effective Schools Accreditation](#)

[ProPath Needs Assessment](#)

[Avanti](#)

[Featured Presenters](#)

[Online PD Comparison](#)

[Free Resources](#) ▼

[Reproducibles & Study Guides](#)

[Webinars](#)

[All Things PLC](#)

[All Things Assessment](#)

[Video Library](#)

[Video Library](#)

[Blog](#)

[Podcasts](#)

[About Us](#) ▼

[Who we are](#)

[State Offices](#)

[News Center](#)

[The DuFour Award](#)

[Trade Shows](#)

[Careers](#)

[Knowledge Base](#)



Search & Register
for Camps



2025 USA Summer Training Camps - Spirit, Dance & Band



At USA Summer Camp, you'll experience five key areas of focus:

Skills Training
Coaches' Education
Safety
One-on-One Attention
Team Bonding

WHAT'S NEW AT CAMP

Cheerleading Program



Songleading/Pom Program



Pep Flag & Short Flag Program



Mascot Program



Camp Types

Find the camp type that's perfect for your team's needs, budget and overall camp experience.

[Learn More](#)

LEARN MORE



Camp Locations

Choose the best camp location for your team!

[Explore Locations](#)

EXPLORE LOCATIONS

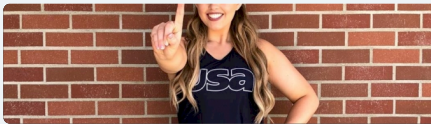


USA College Spirit Camp

The west coast College Camp of Choice!

[EXPLORE CAMP](#)

NEWS



[USA's 5 Tips For The Most Memorable...](#)

JUL. 2, 2021



[Dos and Don'ts of Safety](#)

MAR. 1, 2021



[Meet Our Summer Camp Staff Who Lead With Love](#)

AUG. 17, 2020



[Showcase Your Home Routines On Varsity TV!](#)

JUL. 9, 2020



[5 Strategies to Team Bond During Social Distancing](#)

MAY. 28, 2020



[From Full Out to Chill Out](#)

MAY. 15, 2020



[Raising Spirits by Celebrating Others](#)

MAY 7, 2020



[Amp Up Family Game Night](#)

APR. 27, 2020



[Family Team Bonding](#)

MAR. 23, 2020



[Let's Get Technical \(Fabrics\)](#)

MAR. 5, 2020



[Casting Call: Varsity Footwear #SoleStory](#)

FEB. 25, 2020



[The Perfect Cheer Shoes and Dance Shoes For...](#)

FEB. 20, 2020



Varsity TV EVENTS



IMPORTANT LINKS

- [Varsity TV](#)
- [Varsity Shop](#)
- [Varsity University](#)
- [USA Cheer](#)
- [U.S. All Star Federation](#)
- [International All Star Federation](#)
- [International Cheer Union](#)
- [Varsity Brands](#)
- [Terms of Use](#)
- [Privacy Policy](#)
- [California Privacy Policy](#)
- [Your Privacy Choices](#)

Your Privacy Choices

[- Close Event Details](#)

Event Information

Team Type: High School/Jr High

Camp Type: Resort Camp

Activity: Dance

Program: Performance Dance

Combo Cheer/Dance Session

Overnight Athlete:

4 per room: \$610.00

3 per room: \$658.00

2 per room: \$753.00

1 per room: \$1040.00

Instruction Only:

Athlete: \$361.00 **Coach:** \$297.00

CLOSED

SHARE EVENT

[About this Location](#)

Additional Information

This session is full and not accepting registrations at this time. Please contact your State Director for assistance in finding the best option for you and your team.

Overnight price includes 3 breakfasts, 2 lunches, and 3 dinners.